

Prestained Protein Marker, Plus

Cat No : PT-PS03 (1 vials, 250 µl per vial)
SA-PS03 (1 vials, 25 µl per vial)

Description : Prestained Protein Ladder is a mixture of purified proteins covalently coupled to blue, orange and green dye that resolves to 10 bands when electrophoresed. This standard provides a quick way to assess the quality of an electrophoretic transfer and act as a control in repetitive blotting experiments.

Contents : Approximately 0.1-0.2 mg/ml of each protein in 33%(v/v) glycerol, 2% SDS, 62.5 mM Tris-H₃PO₄ (pH 7.5 at 25°C), 10 mM DTT, 1 mM EDTA, 1 Mm NaN₃. Thaw the solution at RT for few seconds (**do not boil**) to dissolve any solids which may have precipitated at -20°C. Load 10 µl/well for full length gels (16-20 cm) or 5 µl/well for mini-gel.

Storage : -20 °C stable for 1 year.

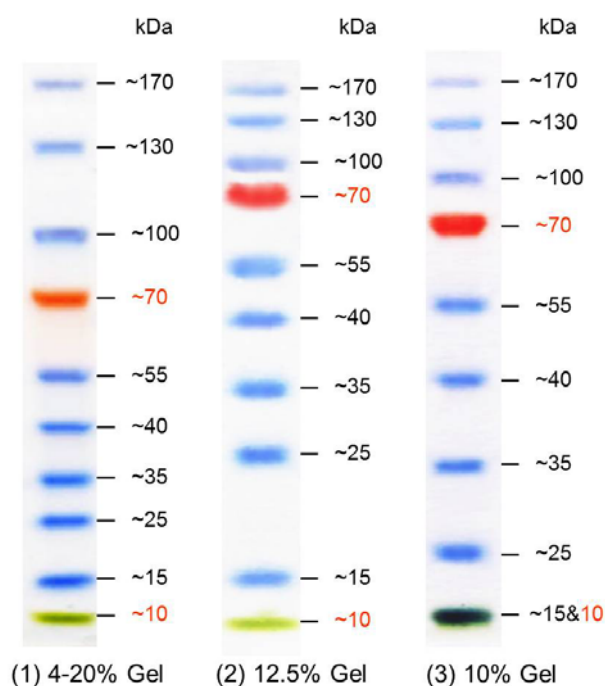


Figure. Migration pattern of Prestained Protein Marker, Plus .

Markers run on different percentage SDS-PAGE.

(1) precast 4%-20% gel (RunBlue gel, cat no: NxG42012)

(2) 12.5% gel and (3) 10% gel.

Note : The 15 and 10 kDa size on (3) are overlapping due to the resolution character of the gel.

For Research Using Only.

Please do not hesitate to contact us if you have any questions.

Manufactured for and distributed by Protech Technology Enterprise Co.,Ltd
TEL : +886-2-2655-7677 / FAX : +886-2-2655-7601 / Toll Free : 0800-231-530
E-MAIL: service@bio-protech.com.tw ; tech@bio-protech.com.tw
WEB: <http://www.bio-protech.com.tw>