

Bio-1Kb™ Mass DNA Ladder

Cat No : PT-M5-1KB (500 µl)
SA-M5-1KB (50 µl)

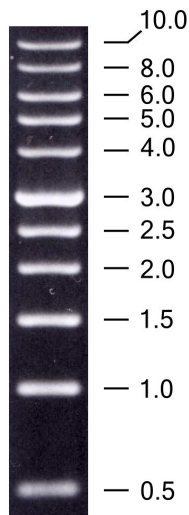
Usage: Loading 5 µl per lane

Description : The Bio-1Kb DNA ladder is the size of double stranded DNA from 500-10,000 base pairs. The DNA ladder contains 11 linear DNA bands of 0.5, 1.0, 1.5, 2.0, 2.5, 3.0, 4.0, 5.0, 6.0, 8.0 and 10.0 Kbp. The reference band (3000 bp) contain the larger amount than others.

Quantitative analysis: DNA quantify of each band per 5ul loading are as follow : 0.5 Kb (35 ng), 1.0 Kb (50 ng), 1.5 Kb (45 ng), 2.0 & 2.5 Kb (40 ng), 3.0 Kb (120 ng), 4.0 & 5.0 & 6.0 Kb (30 ng), 8.0 & 10.0 Kb (20 ng).

Storage buffer The Bio-1 KB DNA ladder is supplied in 10mM Tris-Cl (pH 8.0), 5mM EDTA.

Storage -20°C stable for one year.



0.7 % Agarose Gel in 0.5X TBE Buffer (Amresco, Agarose I)

For Research Using Only.

Please do not hesitate to contact us if you have any questions.

Manufactured for and distributed by Protech Technology Enterprise Co.,Ltd

TEL : +886-2-2655-7677 / FAX : +886-2-2655-7601 / Toll Free : 0800-231-530

E-MAIL: service@bio-protech.com.tw ; tech@bio-protech.com.tw

WEB: <http://www.bio-protech.com.tw>